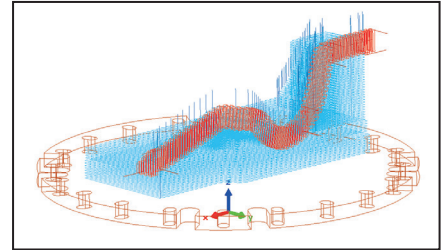


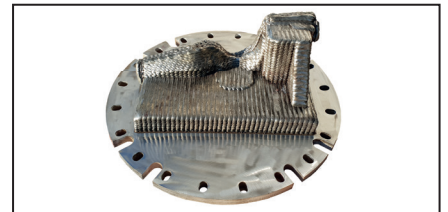
SHEET METAL CUTTING AND FORMING TOOL FROM THE AUTOMOTIVE INDUSTRY



Metal printed part



CAD/CAM model



Metal printed part

INFORMATION ON THE COMPONENT PART

- Production of the base body from 1.4316 and the blade from 1.4718 (HRC 55) in one production step
- Conventional manufacturing technology: casting & milling
- Problems with the procurement:
 - Long delivery times of the cast part
 - Many production steps
 - During the development many adjustments are made, which have to be implemented quickly
 - Short procurement time is a requirement for a short development phase

TECHNICAL DATA

Machine: arc405

Dimension [mm]:

L = 283 | H = 123 | W = 145

Wire: 1.4316 | Ø 1,0 mm
1.4718 | Ø 1,0 mm

Printing mass:

1.4316 | 14,1 kg

1.4718 | 1 kg






Printing time: 8,50 h

ALTERNATIVES TO CONVENTIONAL MANUFACTURING TECHNOLOGIES

3DMP®

- Fast and flexible procurement of the near-net shape blank as required
- Saving of manufacturing steps (e.g. hardening)
- Shortening of the required turning/milling time

BENEFITS OF 3DMP®

-  Reduction of manufacturing time
-  Cost savings
-  Small units
-  Material savings
-  Fast customization

ANY QUESTIONS?

GEFERTEC GmbH | Schwarze-Pumpe-Weg 16 | 12681 Berlin | Germany
Phone: +49 30 91 20 74 360 | info@gefertec.de